

VC-10-RGB

VARIABLE MESSAGE SIGN



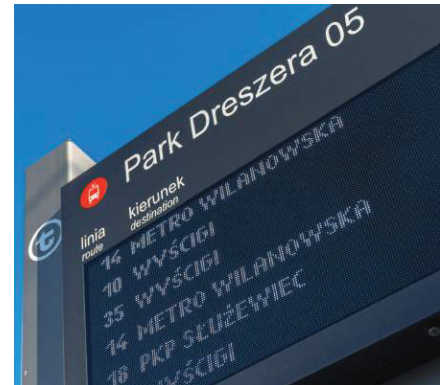
ABOUT STARVIEW VMS PRODUCTS

The Starview Variable message sign (VMS) is an NTCIP-compliant solution for applications requiring a light-weight package with an extended viewing angle. Starview VMS products fit any ITS application and offer industry-critical reliability, legibility, and serviceability.

Featuring an innovative high-contrast full-matrix design, the VC-5-RGB Series provides legibility ideal for locations such as arterial roads and toll booths. The sign's modular design allows it to be built in many sizes. Available in amber or full color, the display's full-matrix configuration creates larger characters and graphics.

KEY FEATURES

- Lightweight, quick-detach modules for easy rear-side access to components.
- Chip of LED uses SMD LED 3-in-1 with high performance.
- Continually-cooling, forced-air ventilation for increased VMS longevity.
- Allows display of any language.
- IP66 protection against environment influences.
- Conforms to all relevant subsets of NTCIP standards.
- Integrates with Ethernet (wire or fiber) via TCP/TP protocol.
- Sign display is assembled with LED Cabinets. LED Cabinets form the LED matrix.
- Full solution design for ITS applications, including VMS controller and VMS Server.
- Turn on/off VMS sign via LAN network.
- VMS temperature status.
- Power failure warning.
- Auto balance brightness.
- Cabinet Door status (close/open).
- Hardware high temperature/smoke warning.
- Network communication status.
- Fan system failure warning.
- Photo sensor (light measuring device) error warning.
- Pixels failure warning (cameras scanning, option).



VMS DISPLAY TECHNOLOGY

Starview brings outdoor LED video to the next level with its SMD LED display solution. Designed for premier organizations that can accept only the highest image quality at the closest viewing distances, this product takes advantage of 3-in-1SMD (surface-mount device) LED technology to produce exceptional brightness, unsurpassed viewing angles and incredible picture detail. Designed and manufactured by Starview, it offers the reliability, longevity and peace-of-mind that only an industry leader.

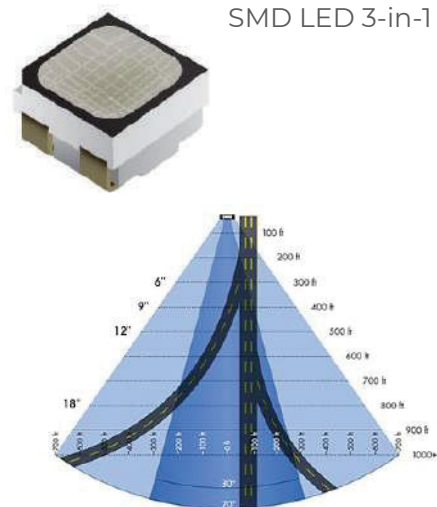


EFFICIENT DESIGN

Outdoor SMD technology allows for tight line spacings previously unavailable in outdoor applications. The resulting high-resolution displays with exceptionally manageable form factors are ideal for high-profile marquee and sports applications.

VIEWING ANGLE

CONSIDERATIONS Road configurations and VMS locations affect VMS legibility. Wide viewing angle of up to 140 degrees for roadside position, broad roadways and municipal streets. Recent LED technology developments allow agencies to install VMS with LEDs that have a greater viewing angle rather than tilting the modules.



RESOLUTION

Means the number of pixels in the physical area of the VMS. The greater the number of pixels per square meter, the greater the amount of detail displayed. Factoring in viewing distance, VMS used in roadway applications typically require high resolutions is best.



Starview offers a wide range of VMS products for any roadway application. VMS VC-5-RGB Series can display character heights, as well as the viewing angles and industry-accepted brightness to ensure VMS legibility in any roadway setting.



URBAN ROADS

Increase safety and efficiency by providing wayfinding and guidance through congested urban areas.



FREEWAY

Convey clear, effective messages to high-speed traffic with Starview VMS



MANAGED LANES

These smaller, economical VMS display symbols, text and numbers, instantly directing traffic to the most convenient lane and maximizing the benefits.



TOOLLING STATION

Provide clear instructions, organize lanes and increase safety with full-color, high-resolution VMS. Available in many sizes and resolutions, these intelligent displays establish a valuable visual connection as motorists approach toll facilities.



TUNNELS

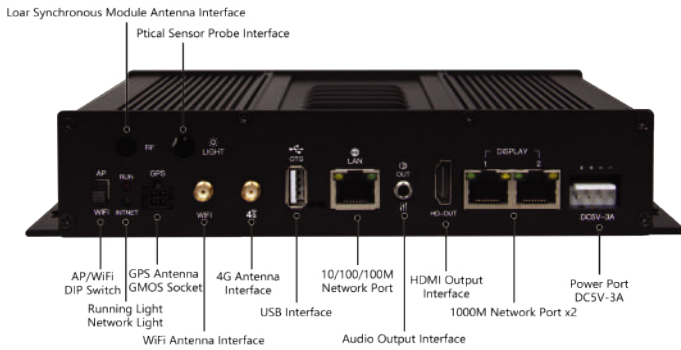
Maximize safety by preparing traffic for constricted passages, construction zones and more.



PARKING GUIDANCE

Minimize circulation congestion by guiding drivers to available parking facilities.

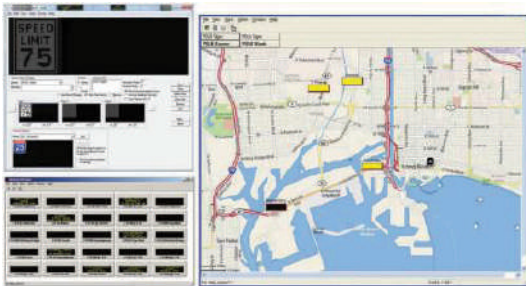
VMS CONTROLLER



KEY FEATURES

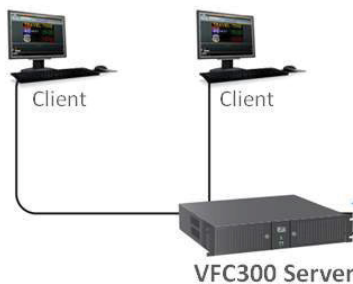
- Support HDMI input and output.
 - 1.3 million dual network ports loaded.
 - Onboard dual WiFi module, support AP mode and Station mode.
 - Integrate auto-light sensor interface.
 - Support full color, 1-32 scan modes modules, standard driver IC.
 - Industrial level Flash: 16GB.
 - Onboard dual WiFi module, support AP mode and Station mode.
- Web server built in, support local webpage produce; support editing offline programs via computer, iphone, android smartphone, laptop and so on.
 - Support video hard decoding, support 1080p video and most of formats of video, image and text.

VFC300 SERVER



SOFTWARE FEATURES

- Terminal control
- Media contents management
- Programing
- Check Task
- System Log
- GPS/Map Task Management
- User Management
- Maintenance Services schedule
- Screen Shot function
- Realtime Massage (DMS)
- Task Program
- GPS Task Function
- Live Video
- Screens Switching
- Screen Brightness contro
- Voice Volume Control
- System Group Management
- System Configuration setting
- Hardware status management
- Switching Function Warning
- Online system updates
- Reboot function
- Terminal transfer function
- Upload Player Logs
- HTML Loading
- Videos Monitoring



Technical specifications**VC-10-RGB**

| | |
|--------------------------------|--|
| Pixel Configuration | RGB 3-in-1 (full color) |
| Chip of LED | SMD |
| Pixel Pitch | 10 mm (P10) |
| Module Size (W x H) | 320 x 160 mm / 320 x 320 mm |
| Cabinet Size (W x H) | 1280 x 1280 mm 960 x 960 mm 640 x 640 mm |
| Module Resolution | 32 x 16 pixels / 32 x 32 pixels |
| Cabinet Design | Slim Aluminum Cabinet |
| Driver IC | 2033 IC |
| Contrast Ratio | 3000:1 |
| Brightness | 6500 cd/m ² |
| Brightness Level | Manual/Auto: 256 levels |
| Color Temperature (Adjustable) | 6500 ± 500°K |
| Scan Mode | 1/2 static |
| Data Transfer Method | RJ45 |
| Frame Rate | > 60 frames/sec |
| Refresh Rate (Adjustable) | 3840 Hz |
| Gray Scale/Color | 4096 Gray levels/ 16.7M colors |
| Viewing Angle (H/V) | 140°H / 140°V |
| Service Access | Front or Rear |
| LED Lifetime | > 100,000hrs Typ |
| Protection | Double - Door Cabinet with IP66 Design |
| Operating Method | Manual/Auto mode |
| Operating Temperature | -30° to 60°C |
| Operating Humidity | 5% ~ 99% RH |
| Protocol | TCP/IP |
| Communication | NTCIP |
| Power Consumption | 750W/m ² Maximum; 230W/m ² Average |
| Line Voltage | AC100 ~ 240V @50/60Hz |

For technical or sales support, please visit:

www.starviewint.asia

Performance specifications are typical. Due to constant research, specifications are subject to change without notice. For the most up-to-date specifications, please contact an authorized Starview representative.

For assistance with confirming the Jurisdiction & Classification of Starview Asia products, please contact info@starviewint.asia

Copyright © 2025 STARVIEW ASIA. All rights reserved.
Australia Headquarters: Level 40, 140 Williams Street, Melbourne VIC 3000, Australia