



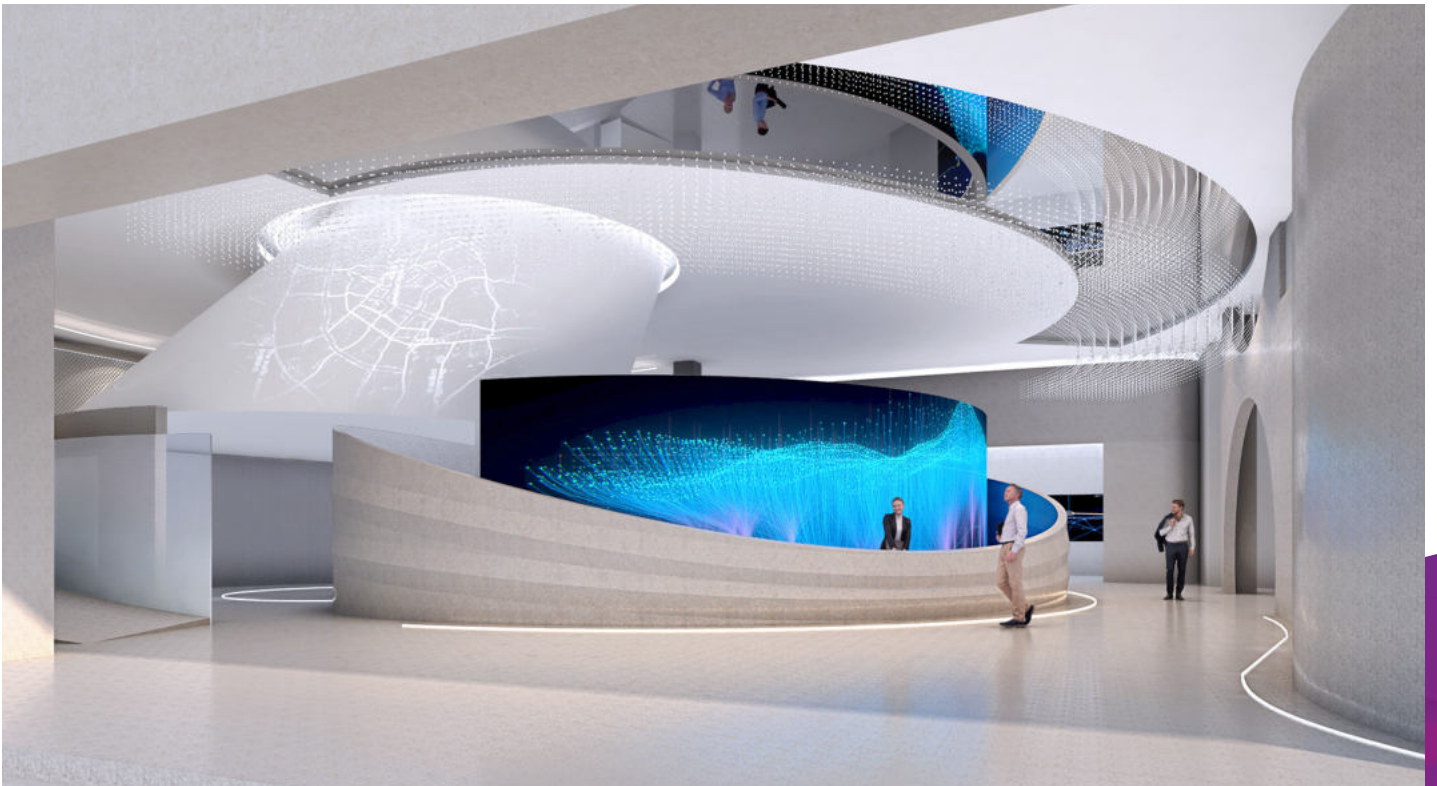
## SA-FCL1.5

SOFT LED MODULE DESIGN

### LED SOLUTION

Starview SA-FCL1.5 adaptive LED tile allows for more creativity than ever before. Its radical lightweight design eliminates any traditional display screen component: no shader, no perforations, nothing to interfere with the viewing experience. Its light weight and ability to curve, bend, fold and attach to virtually any surface makes it perfect for those installations that call for a non-traditional LED solution.

1. Good flexibility, can be curved freely
2. Make a customized personalized design
3. Adapt to more complex environments and better visual angles
4. Soft frame is insulation, big magnetic force, good flatness
5. Allow creating Module video wall up to 360 curves
6. Unlimited the ability to daisy chain multiple modules to expand your ideas indefinitely

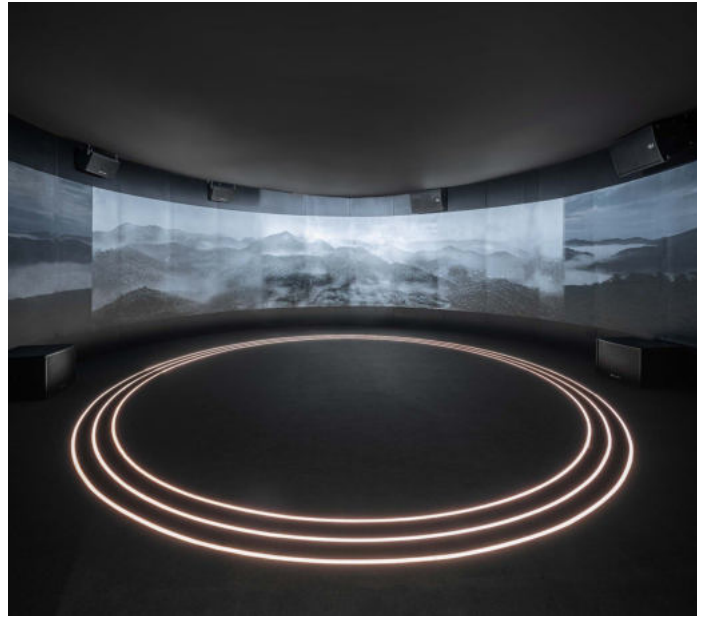


## HIGHLIGHT



### MAGNETIC

The slim and lightweight magnetic module can fit any design and adhere to any custom frame. It requires very little space for wiring and mounting.



### CUSTOM FRAMES

Starview SA-FCL1.5 specific framing structure is designed and manufactured to accomplish your unique design and deployment.



### GOOD FLEXIBILITY

Module with small-unit and flexible design, makes possibility of more complicated shapes for the video show.



### LARGE VIEW ANGLE

Make every viewing angle ideal, ensuring color and image size are always standard and vivid.

For technical or sales support, please visit:  
[www.starviewint.asia](http://www.starviewint.asia)

For assistance with confirming the Jurisdiction & Classification of Starview Asia products, please contact [info@starviewint.asia](mailto:info@starviewint.asia)

Copyright © 2025 STARVIEW ASIA. All rights reserved.  
Australia Headquarters: Level 40, 140 Williams Street, Melbourne VIC 3000, Australia

