

# VC-20-RGB-P-EU

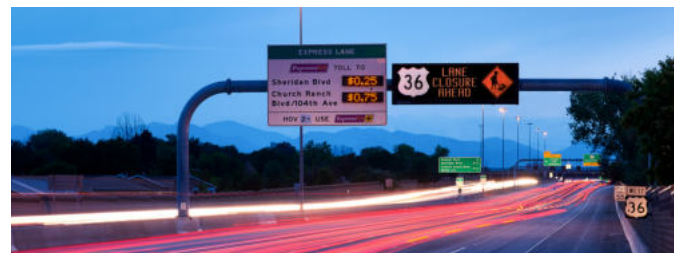
## VARIABLE MESSAGE SIGN

### DESCRIPTION

- The VC-20-RGB-P-EU Variable Message Sign (VMS) utilises the latest in LED technology to achieve an elegant solution to deliver clearly visible signage for urban traffic management applications.
- Built on a modular design philosophy, the VC-20-RGB-P-EU VMS is scalable in size to fit most applications. It's fully EN 12966 compliant. The RGB full colour matrix technology ensures that either static images or video can be clearly seen even in the brightest of sunlight.
- By using an innovative post and enclosure design, the sign is available with multiple mounting options and allows for colour customisation of the assembly to meet individual customer preferences. The powder coated aluminum fabrications are designed to withstand the rigours of the weather.
- The system architecture is based on the latest Internet of Things (IoT) compatible protocols while remaining compatible with UTMC, and legacy interfaces

### KEY FEATURE

- Lightweight, quick-detach modules for easy rear-side access to components.
- Chip of LED uses SMD LED 3-in-1 with high performance.
- Cooling system: Fanless, using thermal conductive silicone layer combined with natural ventilation
- Special structure: Minimizes the impact of wind on the surface
- Allows display of any language.
- IP67 protection against environment influences.
- Conforms to all relevant subsets of NTCIP standards.
- Integrates with Ethernet (wire or fiber) via TCP/IP protocol.
- Sign display is assembled with LED Cabinets. LED Cabinets form the LED matrix.
- Full solution design for ITS applications, including VMS controller and VMS Server.
- Turn on/off VMS sign remotely via LAN network.



- VMS temperature status (High temperature warning sign VMS).
- Power failure warning.
- Auto balance brightness.
- Cabinet door status (close/open).
- Hardware high temperature/smoke warning.
- Network communication status.
- Photo sensor (light measuring device) error warning.
- Pixels failure warning (Detect location and color at pixel defect point).
- API/SDK support for 3rd party integration.

## VMS APPLICATION

Starview offers a wide range of VMS products for any roadway application. The VC-20-RGB-P-EU can display character heights, as well as the viewing angles and industry-accepted brightness to ensure VMS legibility in any roadway setting.



### TOOLING STATION

Provide clear instructions, organize lanes and increase safety with full-color, high-resolution VMS. Available in many sizes and resolutions, these intelligent displays establish a valuable visual connection as motorists approach toll facilities.



### MANAGED LANES

These smaller, economical VMS display symbols, text and numbers, instantly directing traffic to the most convenient lane and maximizing the benefits.



### TUNNELS

Maximize safety by preparing traffic for constricted passages, construction zones and more.



### PARKING GUIDANCE

Minimize circulation congestion by guiding drivers to available parking facilities.



### URBAN ROADS

Increase safety and efficiency by providing wayfinding and guidance through congested urban areas.



### FREEWAY

Convey clear, effective messages to high-speed traffic with Starview VMS.



For technical or sales support, please visit:  
[www.starviewint.asia](http://www.starviewint.asia)

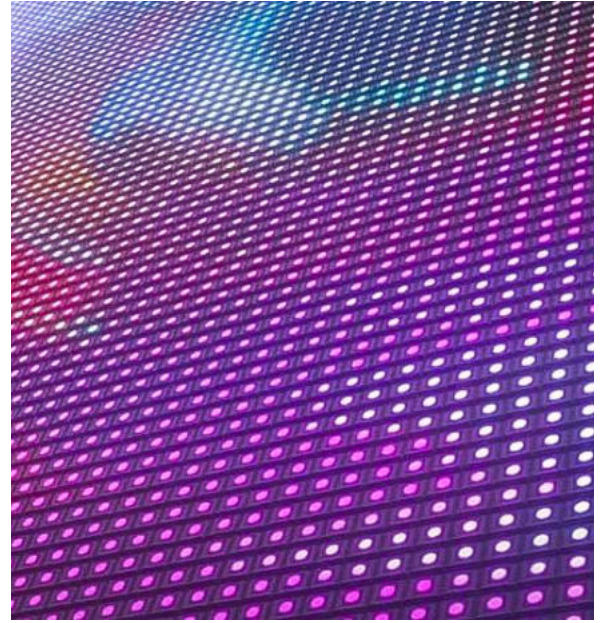
For assistance with confirming the Jurisdiction & Classification of Starview Asia products, please contact [info@starviewint.asia](mailto:info@starviewint.asia)

Copyright © 2025 STARVIEW ASIA. All rights reserved.  
Australia Headquarters: Level 40, 140 Williams Street, Melbourne VIC 3000, Australia

## THERE IS A REASON, WHY STARVIEW VMS ARE BETTER

When the first LEDs were introduced in the traffic sector more than 10 years ago, Starview started developing its own high-performance optical system for LED variable message signs. This technology was to prove groundbreaking for the market. It consists of a special lens that directs the light where it is needed: towards the driver on the road. By focusing the light beam, no light is "wasted" to the sides and upwards, and we can reduce the power required by up to 95% - a remarkable reduction in the amount of energy consumed.

Our lens technology, which offers an unrivalled performance, ensures the best visibility even in adverse conditions, especially when the sun is low in the sky. The external dimensions, mounting, service access, electrical supply and data interface can be flexibly adapted to meet the requirements. The lower power consumption for all freely programmable and full colour applications means that operating costs, ageing effects are prevented and maintenance and spare parts costs are minimised.



No.	Test Items	Reference	Test Conditions	
1	Temperature Cycling Test	EIAJ ED-4701 100 105	-40°C ~ 25°C ~ 100°C ~ 25°C 30min ~ 5min ~ 30min ~ 5min	100 Cycles
2	Thermal Shock Test	EIAJ ED-4701 300 307	-40°C ~ 125°C 10min ~ 10min	200 Cycles
3	High Temperature Storage Test	EIAJ ED-4701 200 201	Ta = 125°C	1,000 Hours
4	Low Temperature Storage Test	EIAJ ED-4701 200 202	Ta = 55°C	1,000 Hours
5	Continuous Operating Test	EIAJ ED-4701 100 101	Ta = 25 ±5°C IF = 1.5 times the split current	1,000 Hours
6	Soldering Resistance Test	EIAJ ED-4701 300 301	Pre treatment: Tsol = 260°C, T = 10s	3 Times
7	Temperature Cycling Test	EIAJ ED-4701 100 105	1. Dehumidify at 125°C for 24 hours Moisture Removal 125°C/24HR 2. Ta = 60°C, RH = 60% moisture absorption for 52 hours Moisture Absorption Ta = 60°C, RH=60%/52HR 3. Tsol = 260°, T = 10s reflow soldering Tsol = 260°, T = 10s Reflow Soldering	3 Times

## Technical specifications

## VC-20-RGB-P-EU

Part Number	VC-384x64-20-RGB-P	VC-88x64-20-RGB-P	VC-64x64-20-RGB-P
Pixel Configuration	RGB 3-in-1 (Full color)		
Chip of LED	SMD		
Pixel Pitch	20 mm		
Pixel Density	2,500 Pixels/m <sup>2</sup>		
Cabinet Size (W x H)	7960 x 1560 mm (Housing), 7680 x 1280 mm (Active display)	1960 x 1480 mm (Housing), 1760 x 1280 mm (Active display)	1420 x 1420 mm (Housing), 1280 x 1280 mm (Active display)
Cabinet Resolution	384 x 64 pixel	88 x 64 pixel	64 x 64 pixel
Cabinet Design	Powder Coated Aluminum Cabinet		
Module Size (W x H, mm) (Customize)	320 x 320 / 320 x 160 / 160 x 320 / 160 x 160		
Module Resolution (W x H, pixel)	16 x 16 / 16 x 8 / 8 x 16 / 8 x 8		
Driver IC	MBI5034		
Contrast Ratio	5,000 : 1		
Brightness Level	Auto/Manual: 256 Levels		
Optical Performance	Luminance	EN 12966 class L3, L3 (*), L3 (T) <sup>2</sup>	
	Luminance Ratio	EN 12966 class R3 <sup>3</sup>	
	Beam Width/View Angle	EN 12966 class B6 <sup>4</sup>	
	Uniformity	EN 12966-1:2025 + A1:2009 <sup>5</sup>	
Chromaticity Coordinates: Colour	EN 12966 class C2 <sup>6</sup>		
Color Temperature	6,500K ±500K		
Refresh Rate (Adjustable)	3840 Hz		
Frame Rate	50 & 60 Hz		
Gray Scale/ Color	14 bit Color Processing Depth		
Service Access	Front/Rear Access		
LED Lifetime	100,000 hours		
MTBF	100,000 hours		
Protection	Cabinet: IP67, Module: IP65		
Control Method	Synchronized with computer monitor		
Control Distance	120 m (no repeating); Optical fiber transmission: 500m - 10km		
Way of Drive	1/2 Static Scan		
Operating Temperature	-30°C ~ 60°C		
Operating Humidity	99% RH non-condensing		
Protocol	TCP/IP		
Communication	NTCIP (Option)		
Power Consumption (Typ)	240W/m <sup>2</sup>		
Power Supply	Dual, Power Supply Redundant (1+1) AC100 ~ 240V @50/60Hz		
Weight	38kg/m <sup>2</sup>		

<sup>1,2,3,4,5,6</sup> The listed certifications are issued for markets in different regions. For the current status of the listed certifications in your region, please contact an authorized Starview representative.

For technical or sales support, please visit:

[www.starviewint.asia](http://www.starviewint.asia)

Performance specifications are typical. Due to constant research, specifications are subject to change without notice. For the most up-to-date specifications, please contact an authorized Starview representative.

For assistance with confirming the Jurisdiction & Classification of Starview Asia products, please contact [info@starviewint.asia](mailto:info@starviewint.asia)

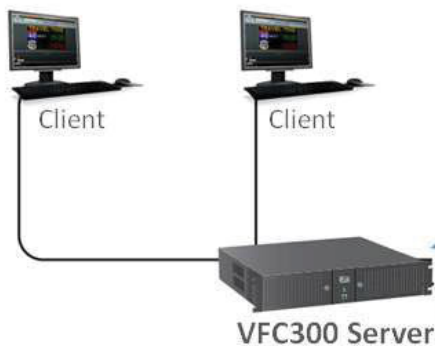
Copyright © 2025 STARVIEW ASIA. All rights reserved.  
Australia Headquarters: Level 40, 140 Williams Street, Melbourne VIC 3000, Australia

## VMS CONTROLLER SOLUTION

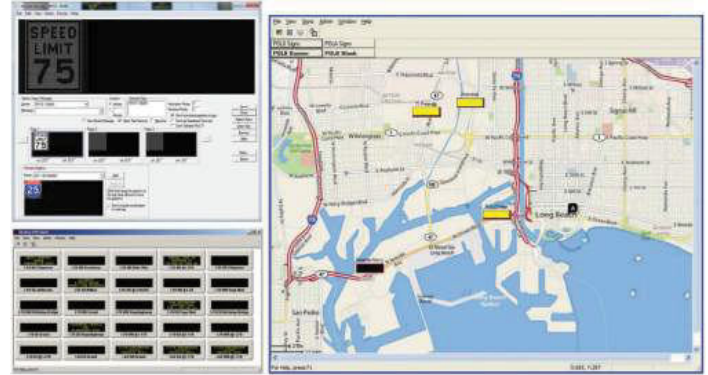
### VMS CONTROLLER

#### Key Features

- Support the external connection of eight element environmental sensor R68 through 485 interface to display environmental information without secondary development.
- Support optional 4G modules. The models of modules in different countries are different. Please provide the country of use for shipment. Support optional 4G modules. Different models fits for different countries. Please confirm the country before shipment.
- Onboard WiFi module for wireless communication.
- Support AP mode and Station mode.
- Built in web server, it supports local web page production, program release and display control of PC, mobile phone, pad and other user terminals, cluster remote program release and display control, and cluster remote monitoring of screen status.
- The timing switch, volume and brightness can be set centrally through the management system.
- Support to play programs according to the program list.
- The timing switch, volume and brightness can be set centrally through the management system.
- Support USB camera.
- Support NTP precise automatic timing.
- Software kit: Cloud publishing platform, Starview PC software.



### VFC300 SERVER



#### Software Features

- Terminal control
- Media contents management
- Programming
- Check Task
- System Log
- GPS/Map Task Management
- User Management
- Maintenance Services schedule
- Screen Shot function
- Realtime Massage (DMS)
- Task Program
- GPS Task Function
- Live Video
- Screens Switching
- Screen Brightness contro
- Voice Volume Control
- System Group Management
- System Configuration setting
- Hardware status management
- Switching Function Warning
- Online system updates
- Reboot function
- Terminal transfer function
- Upload Player Logs
- HTML Loading
- Videos Monitoring

