

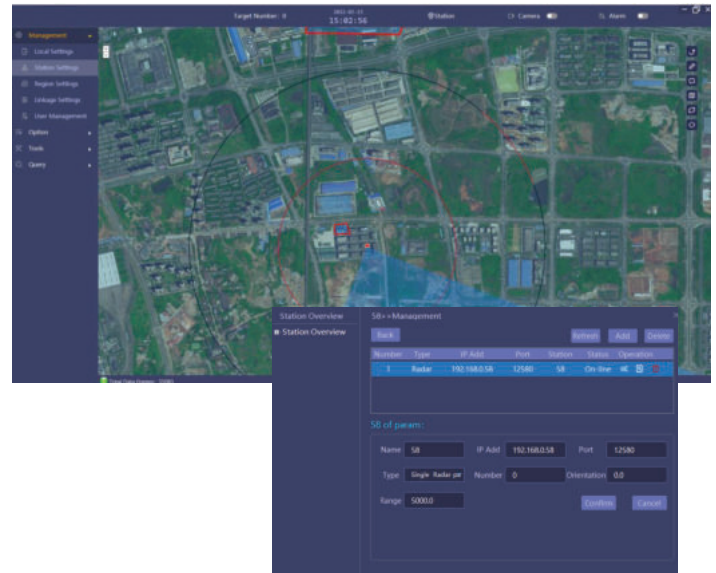


KEY FEATURES

- CUTTING EDGE SOLUTION COMPREHENSIVE MONITORING SOFTWARE
- COMPLETE COMPATIBILITY WITH DIFFERENT RADAR/ RF DETECTOR/ JAMMER / GPS SPOOFING SYSTEM / CAMERA / DRONE CAPTURE SYSTEM
- EFFICIENT AND STABLE HIGH USER USABILITY AND MANAGEMENT EFFICIENCY
- STREAMLINED INTERFACE THROUGH INTUITIVE AND FRIENDLY USER INTERFACE, PROVIDING EASINESS OF OPERATION
- RUBUST FUNCTIONALITY - DIGITAL MAP / REAL TIME MONITORING/ HISTORICAL PLAYBACK / DEVICE MANAGEMENT/WHITE BLACK LIST

SPECIFICATIONS

SOFTWARE
Smart Monitoring Software Terminal display and control software
Supporting different Radars and detection solutions, Up to 9 Radars per system
Software by default adopts online download map for display, and offline map can also be used under special circumstances.
Separate System Setup Per server, Single Setup
Support 3rd Party Cameras upon design
Shielding Areas setup for target detection
Early Warning of suspicious target approaching certain areas
Support English Language
Device link status indicators online support
Tracking or Target information, Track playback
Map Management, Map selection (street, satellite)
Measurement on Map Feature support
Format Conversion of longitude and latitude
Remote Reboot of Radar for Troubleshooting



BASIC HARDWARE REQUIREMENTS
Operating system: 64-bit win10 Professional Edition (recommended)
Adaptive Display resolution
CPU Core i3@2.4GHz Dual core four thread CPU
4GB of memory
Network port: 100M network interface
Installation Recommendation is to install it on a non-system disk (such as D / E / F disk).

For technical or sales support, please visit:
www.starviewtech.net

Performance specifications are typical. Due to constant research, specifications are subject to change without notice. For the most up-to-date specifications, please contact an authorized Starview representative.

For assistance with confirming the Jurisdiction & Classification of Starview Technology products, please contact sales@starviewint.com

Copyright © 2025 Starview Technologies Private Limited. All rights reserved.
Singapore Headquarters: 60 Kaki Bukit Place, #05-19 Eunos Techpark, Singapore 415979