

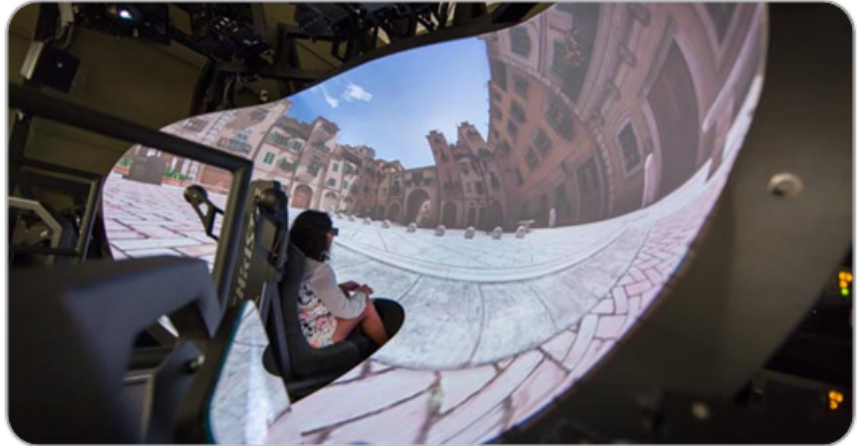
## 3D MAPPING & SIMULATION

### APPLICATION REQUIREMENT

We understand the big picture when it comes to create visualization solutions. From entertainment to training, we know the challenges each environment can bring.

As an industry leader, we have developed visualization and simulation solutions for markets such as:

- Automotive
- Architecture, engineering and construction
- Education and Medical Training
- Energy
- Government and infrastructure
- Museums & Entertainment
- Sciences and biotechnology
- Transportation and training



### SOLUTION PROPOSAL

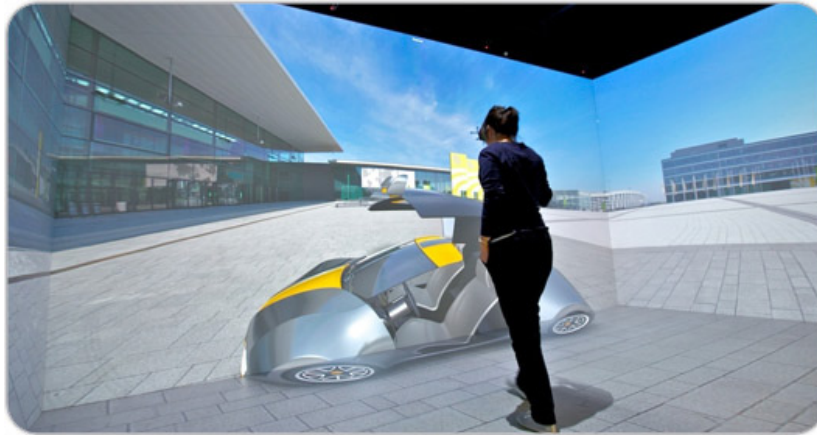
Starview visualization solutions have the power and flexibility to produce images of any size or resolution to meet your design goals. With our advanced and intuitive immersive display solutions, you have the option of choosing a standard solution to meet your requirements.

Standard visualization solutions offer:

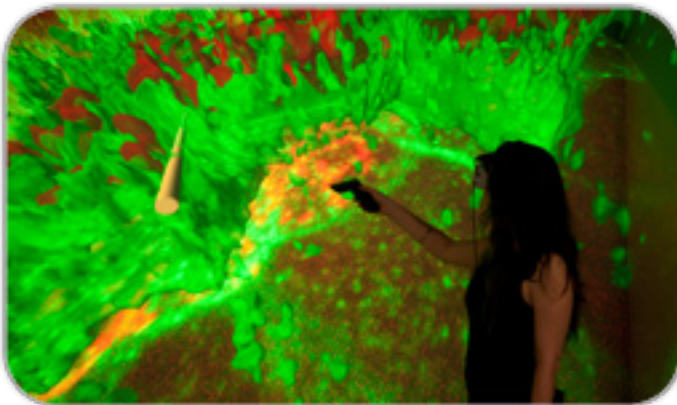
- Faster, easier 3D technology integration
  - The most true-to-life visualizations with Starview projector
  - Smooth, comfortable viewing in 3D with high refresh rates at 120Hz
- Faster, more intuitive interaction with data with motion tracking and interactivity capabilities
- Compatibility with real-time 3D computer graphics
  - Ultra-high resolution in a compact footprint
  - Simple, immediate access to technology with turnkey solutions
  - Industry-leading warranties, provides consistent, reliable technology without worry.

## ROOM-SIZED SPATIALLY IMMERSIVE ENVIRONMENT

The Starview projector is a compact, standard room-sized advanced visualization solution that combines our renowned 3-chip DLP® high-resolution stereoscopic projection with motion tracking, interaction capabilities and real-time 3D computer graphics. This complete turnkey solution creates a large field of view for enhanced teamwork, discovery and quicker, more accurate decision-making. Offering active stereo projection for advanced 3D performance with reduced overall operational costs, the Starview delivers high efficiency, high-performance 3D visualization with low maintenance and a low cost of ownership.

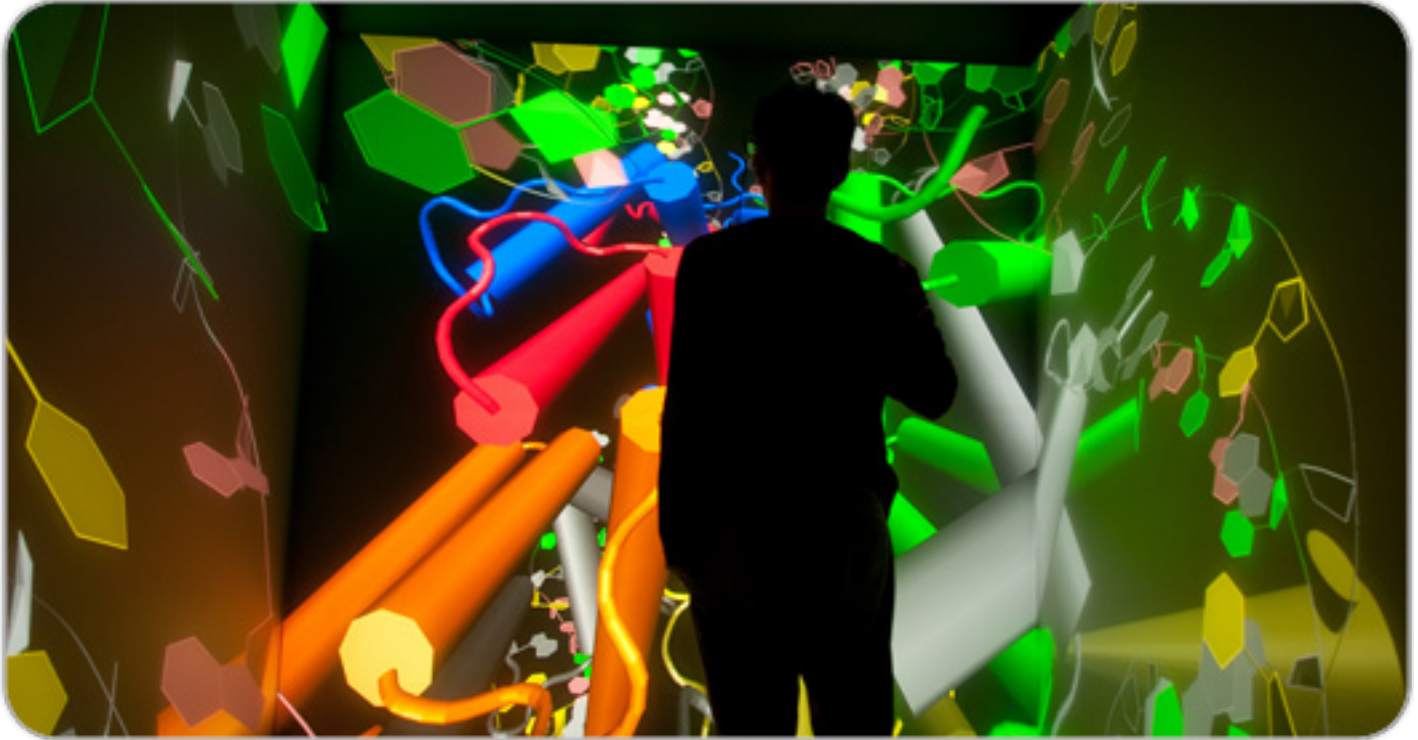


Available as a standard four-sided 8' x 8' configuration with a 4:3 aspect ratio or a high-resolution 8-channel, 8' x 10'6" configuration, both Christie CAVEs offer a complete visualization system. The compact footprint allows our visualization technology to be deployed in constrained environments and the optimized solutions makes implementation rapidly. Lightweight for quick installation yet rigid for structural integrity, the design incorporates projection displays, screens, tracking and interaction technology in one all-inclusive package.

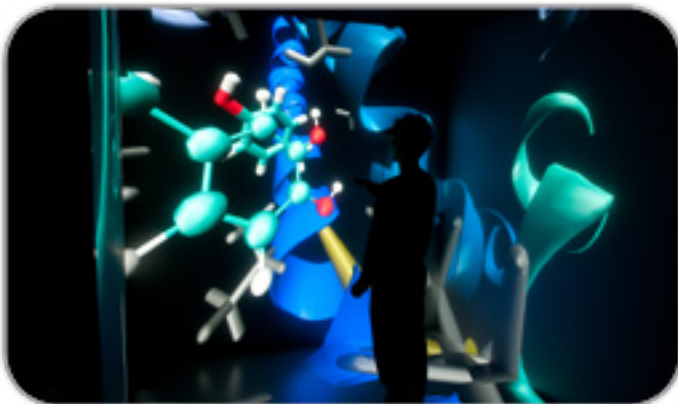


## SOLUTION - SPATIALLY IMMERSIVE ENVIRONMENT

The Starview complete turnkey visualization solution that is economical, compact and easily deployed. It features Starview high-resolution 3-chip DLP® stereoscopic projection combined with motion tracking, interaction capabilities and real-time 3D computer graphics for a truly immersive experience. Designed for a compact space with one soft screen wall and a laminate floor, the Starview projector enhances discovery and decision-making while keeping costs low and space requirements in check.



The footprint fits into a standard 10ft office space and provides the display, the screens, tracking and audio for a complete visualization solution that's optimized to make integration fast. Capable of both active and passive stereo support, the result is visualization with impact – crisp, detailed images, excellent color with brightness uniformity and control capability.



For technical or sales support, please visit:  
[www.starviewint.asia](http://www.starviewint.asia)

For assistance with confirming the Jurisdiction & Classification of Starview Asia products, please contact [info@starviewint.asia](mailto:info@starviewint.asia)

Copyright © 2025 STARVIEW ASIA. All rights reserved.  
Australia Headquarters: Level 40, 140 Williams Street, Melbourne VIC 3000, Australia