



Programmable Button Controller SWC-2000

The SWC-2000 is a remote programmable button controller. Control command can be registered and linked to the buttons by using web browser. The SWC-2000 can control connected units which are connected via LAN or RS-232C. The SWC-2000 can be used on a desk or mounted to a rack.

■ Specification

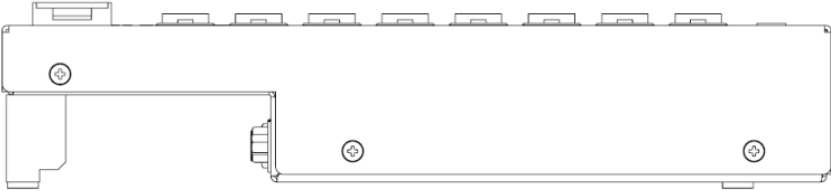
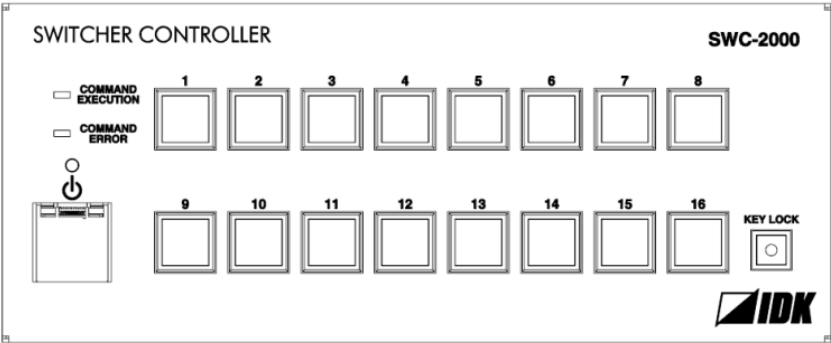
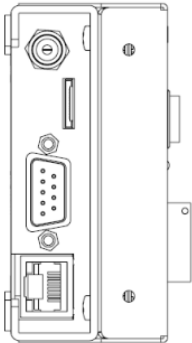
Item		Description
Number of control command buttons		16 buttons
Number of control commands that can be linked		Up to 10 commands per button
Number of control commands that can be registered		Up to 32 commands
Control	RS-232C	1 port/male D-sub (9-pin)
	LAN	1 port/RJ-45 10Base-T/100Base-TX (Auto Negotiation), Auto MDI/MDI-X
Recommended products		IDK's MSD/FDX series PJLink supported products, and others (General purpose products)
General	AC adapter	Input : 100 - 240 VAC ± 10%, 50 Hz/60 Hz ± 3 Hz Output : DC 5 V 3 A (A dedicated AC adapter is provided)
	Power consumption	About 3 Watts
	Dimensions	8.5 (W) × 3.5 (H) × 1.6 (D)" (215 (W) × 88 (H) × 40.6 (D) mm) (Excluding connectors and the like) (*1)
	Weight	1.8 lbs. (0.8 kg)
	Temperature	Operating : 32°F to 104°F (0°C to +40°C) Storage : -4°F to +176°F (-20°C to +80°C)
	Humidity	Operating/Storage: 20% to 90% (Non Condensing)

*1 When mounting the SWC-2000 to an EIA rack, use the optional rack mounting brackets. By using the mounting kit, one or two SWC-2000s can be mounted to the 2U-EIA rack.

■ Recommended products

Items		Parts number
IDK's products	MSD series	MSD-701AMP, MSD-6203, MSD-6204, MSD-6206, MSD-6208, MSD-701UHD, MSD-702UHD, MSD-801UHD, MSD-802UHD, MSD-7201UHD, MSD-7202UHD, MSD-7203UHD, MSD-7204UHD, MSD-7201UHDTB, MSD-7202UHDTB, MSD-7203UHDTB, MSD-7204UHDTB, MSD-402, MSD-501, MSD-502, MSD-701, MSD-702, MSD-EX32, MSD-804FD
	FDX series	FDX-12UHD, FDX-32UHD, FDX-08, FDX-16, FDX-32, FDX-64
Other products		PJLink supported products, and others (General purpose products)

■ Front & Rear panels

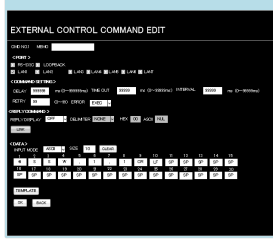


●All specifications and drawings are subject to change without notice. ●Please do not use the supplied AC adapter and power supply cable for other products. ●The terms HDMI and HDMI High-Definition Multimedia Interface, and the HDMI Logo are trademarks or registered trademarks of HDMI Licensing Administrator, Inc. in the United States and other countries. ●PJLink is a trademark in Japan, the United States, and other countries/regions. ●All other company and product names mentioned in this document are either registered trademarks or trademarks of their respective owners. In this document, the “®” or “™” marks may not be specified.



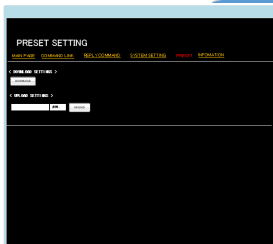
Programmable Button Controller SWC-2000

● Registering Control commands*



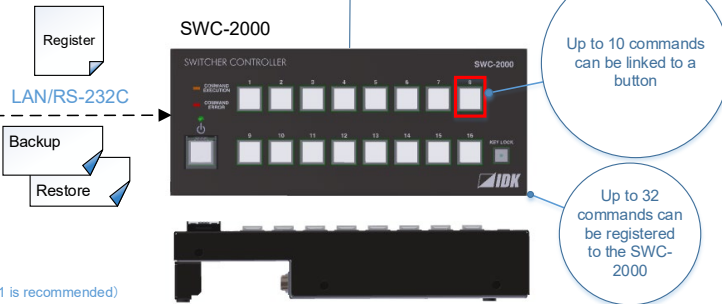
* Control commands can be registered by sending commands from PC

● Backing up and restoring control commands

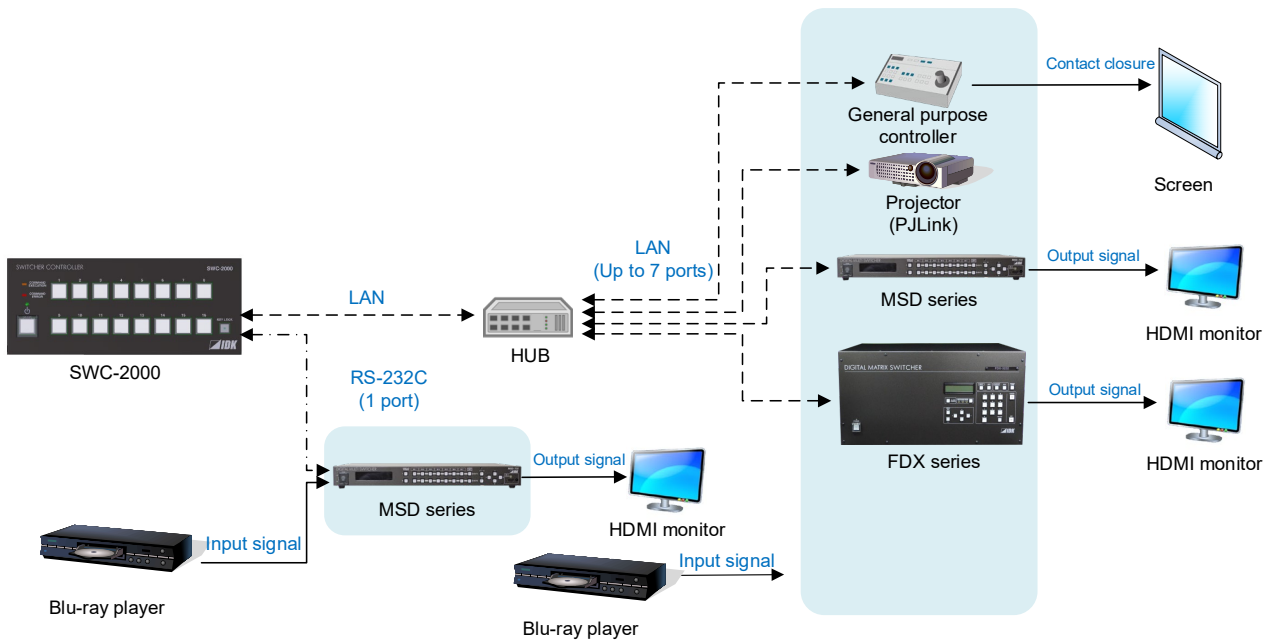


WEB browser
(Internet Explorer Version 11 is recommended)

● Controlled devices



■ Application example



[Features]

- Remote controlling IDK products over LAN or RS-232C
- PJLink
- 16 control command buttons (Up to 10 commands per button)
- Standby
- Button security lockout
- Up to 32 commands can be registered over WEB browser
- Settable LED flashing time
- EIA rack and tabletop mountable

●All specifications and drawings are subject to change without notice. ●Please do not use the supplied AC adapter and power supply cable for other products. ●The terms HDMI and HDMI High-Definition Multimedia Interface, and the HDMI Logo are trademarks or registered trademarks of HDMI Licensing Administrator, Inc. in the United States and other countries. ●PJLink is a trademark in Japan, the United States, and other countries/regions. ●All other company and product names mentioned in this document are either registered trademarks or trademarks of their respective owners. In this document, the “®” or “™” marks may not be specified.